



Light efficiency:

105 Lumen/Watt

Light quality:

CRI: 83,4

Color temperature:

6887 K

Output: 6238 lm

Peak: 4531 cd

Power: 59,6 W

PF: 0,98

18 PLANES



Product name:

LED ARMATÜR 60W

Date and time:

1.11.2018 08:15:50

Additional information:

MODEL : YT60W60L

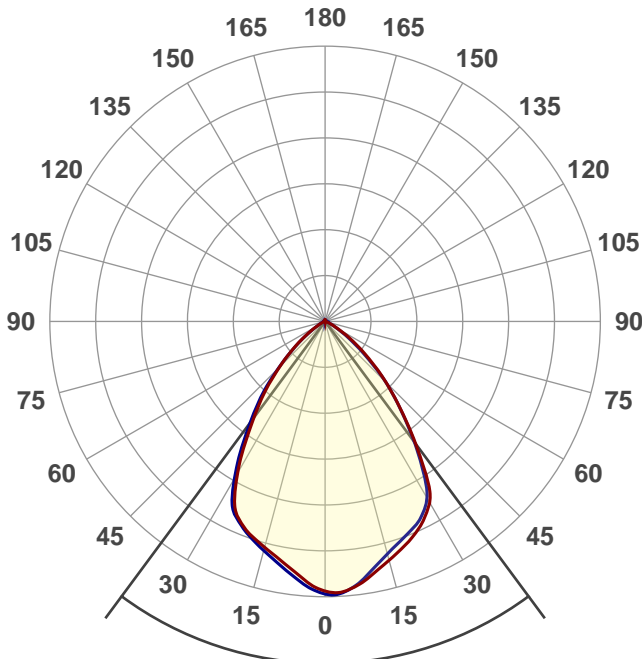
GÜÇ :60W

GİRIS GERILIMI : 190 - 240 VAC

50Hz

SERI NO : S 0172462

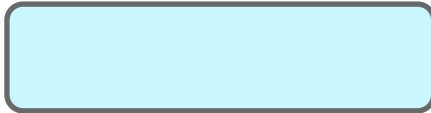
ISIK : 3500 K



Beam angle

73°

Color

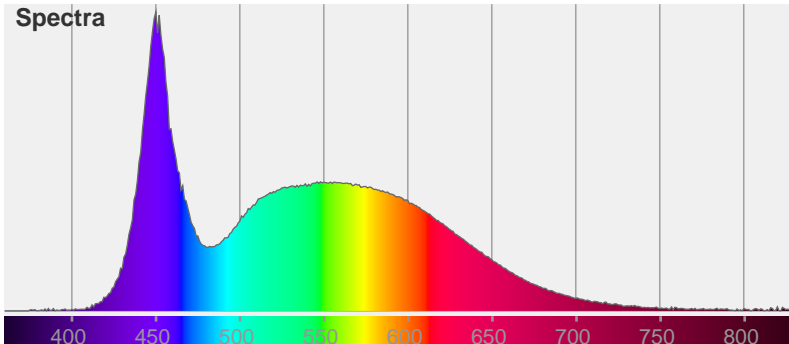


CIE1931

x: 0,307

y: 0,322

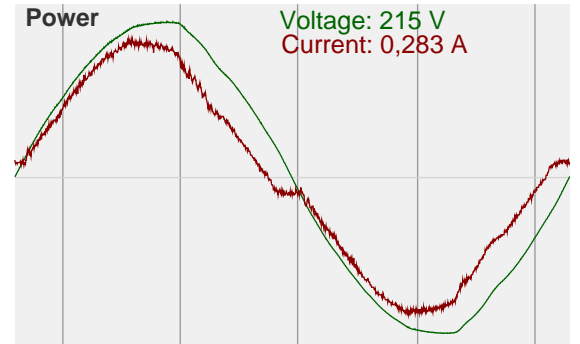
Spectra

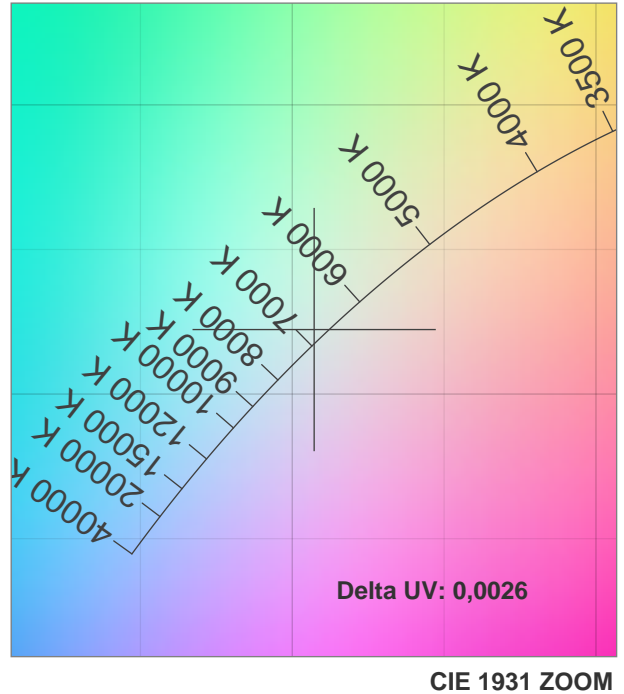
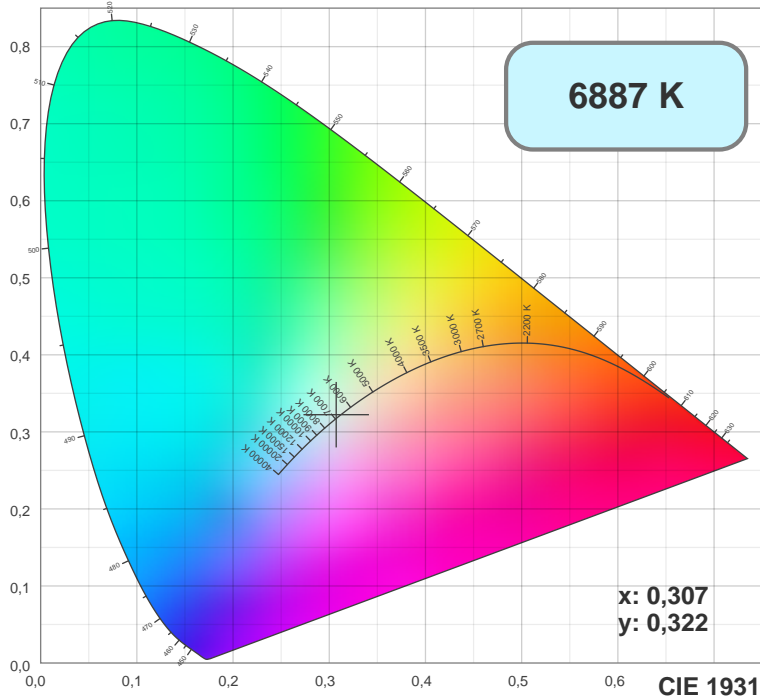


Power

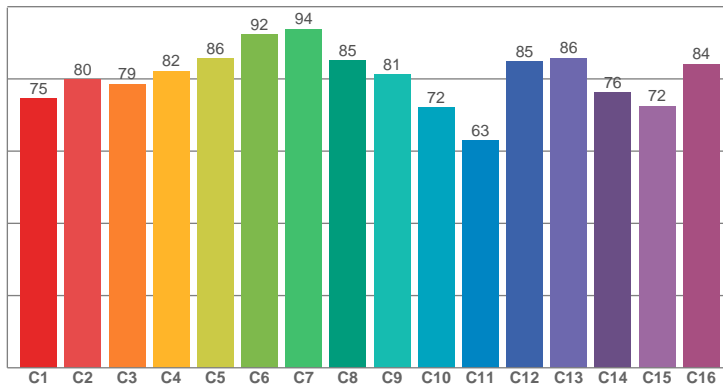
Voltage: 215 V

Current: 0,283 A

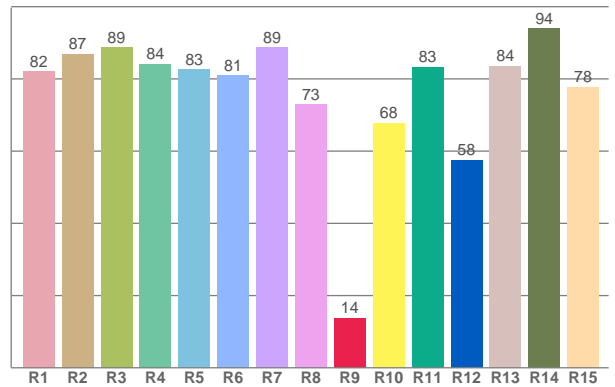




TM30: 81,0



CRI: 83,4 (R1-R8)



CRI R values, only R1-R8 are used to calculate final CRI value

R1	R2	R3	R4	R5	R6	R7	R8	R9	R10	R11	R12	R13	R14	R15
82,12	86,94	88,76	84,14	82,57	80,93	88,77	73,03	13,79	67,80	83,31	57,53	83,57	94,01	77,80

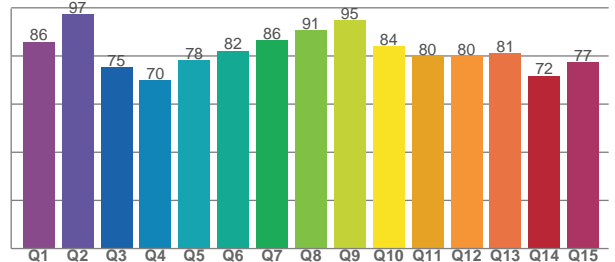
TM30 C values, 16 binned values out of total of 99 C values

C1	C2	C3	C4	C5	C6	C7	C8	C9	C10	C11	C12	C13	C14	C15	C16
74,53	79,87	78,60	82,17	85,61	92,26	93,85	85,19	81,33	72,17	62,86	84,94	85,77	76,23	72,49	84,11

CQS Q values

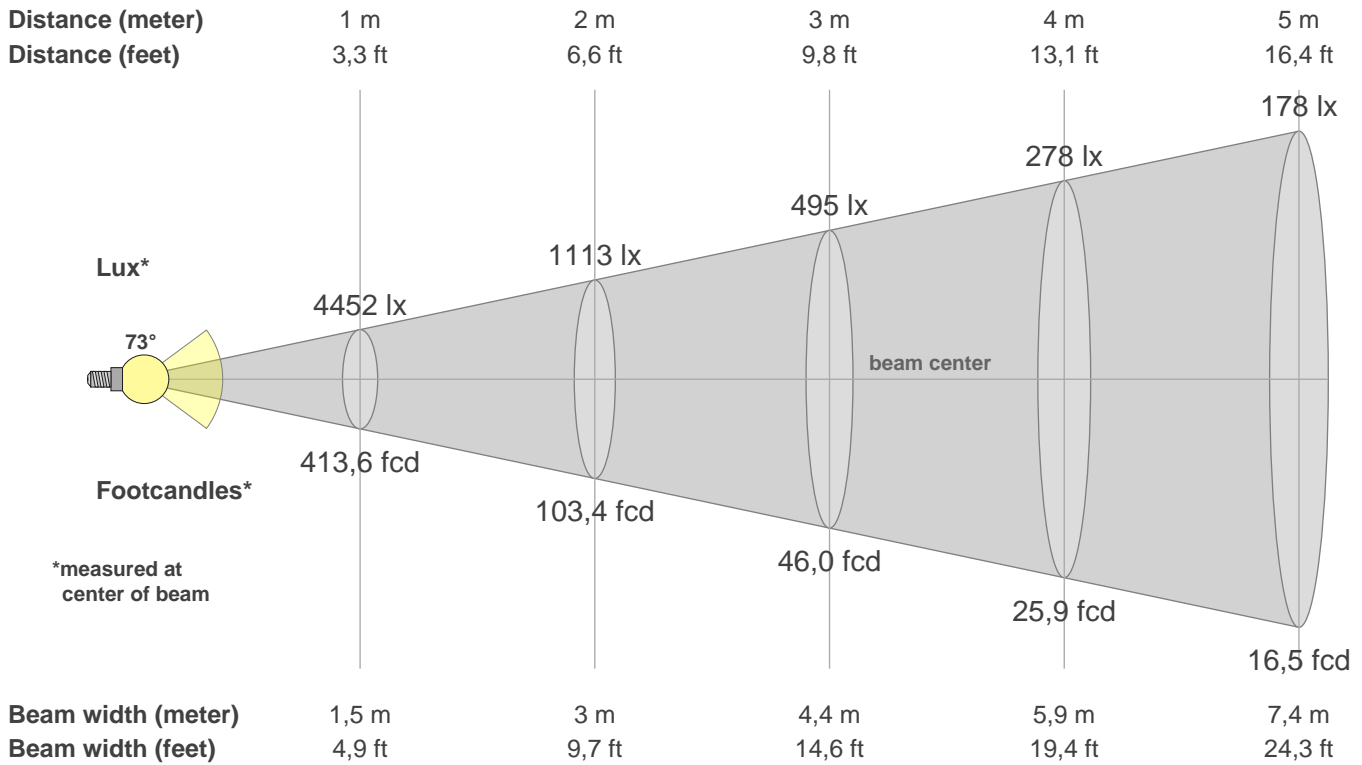
Q1	Q2	Q3	Q4	Q5	Q6	Q7	Q8	Q9	Q10	Q11	Q12	Q13	Q14	Q15
85,98	97,33	75,27	70,00	78,13	82,18	86,48	90,70	94,83	84,07	79,95	80,01	81,07	71,79	77,44

CQS: 80,8



Color parameters

CCT	CRI	CRI R9	TM30 Rf	TM30 Rg	CQS	x	y	u	v	Duv
6887 K	83,4	13,8	81,0	95,7	80,8	0,3	0,3	0,2	0,3	-0,0006



**Intensities in 0° c-plane**

0°	5°	10°	15°	20°	25°	30°	35°	40°	45°	50°	55°	60°	65°	70°	75°	80°	85°	90°	95°
4452	4445	4287	4097	3923	3725	3423	2764	2029	1435	934	547	262	115	59	20	9	6	5	5
100%	100%	96%	92%	88%	84%	77%	62%	46%	32%	21%	12%	6%	3%	1%	0%	0%	0%	0%	0%

**Intensities in 90° c-plane**

0°	5°	10°	15°	20°	25°	30°	35°	40°	45°	50°	55°	60°	65°	70°	75°	80°	85°	90°	95°
4452	4446	4226	3992	3813	3648	3350	2700	2002	1418	851	463	221	109	71	49	27	12	7	7
100%	100%	95%	90%	86%	82%	75%	61%	45%	32%	19%	10%	5%	2%	2%	1%	1%	0%	0%	0%

**Intensities in 180° c-plane**

0°	5°	10°	15°	20°	25°	30°	35°	40°	45°	50°	55°	60°	65°	70°	75°	80°	85°	90°	95°
4452	4268	4051	3874	3712	3462	2889	2182	1597	1073	653	341	149	76	35	18	14	12	10	11
100%	96%	91%	87%	83%	78%	65%	49%	36%	24%	15%	8%	3%	2%	1%	0%	0%	0%	0%	0%

**Intensities in 270° c-plane**

0°	5°	10°	15°	20°	25°	30°	35°	40°	45°	50°	55°	60°	65°	70°	75°	80°	85°	90°	95°
4452	4344	4127	3930	3742	3503	2989	2298	1680	1100	640	320	149	88	61	39	22	14	11	12
100%	98%	93%	88%	84%	79%	67%	52%	38%	25%	14%	7%	3%	2%	1%	1%	0%	0%	0%	0%

Beam angle 50%	Field angle 10%	Cutoff angle 2,5%	Intensity ratio in 120° cone	Intensity ratio in 90° cone
73,0°	108,9°	128,9°	96,1%	83,7%